

# RP600



## RP600 digital protection relay

Easy and no time consuming programming based on a menu oriented interface

TODAY'S NETWORK COMPONENTS REQUIRE MAXIMUM RELIABILITY, CONVIVIALITY AND MAINTENANCE FREEDOM. THE NEW DEBA PROTECTION RELAY RP600 IS THE ANSWER TO THE ABOVE REQUIREMENTS.





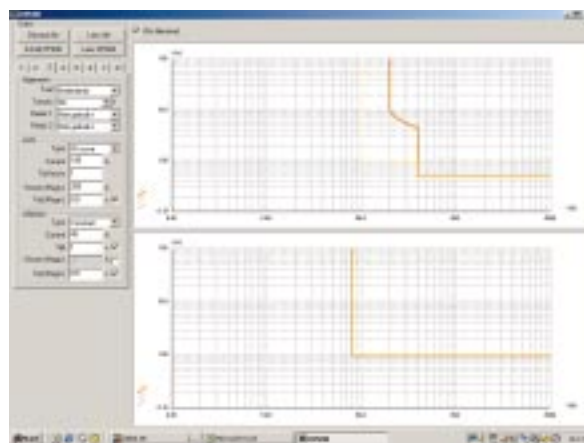
### User friendly

The relay functions are easy accessible and programmable with the help of a laptop or with the support of a menu oriented interface. Beside this conviviality, the relay is specially designed to be easy integrating inside the new VA-2 vacuum circuit breaker generation of Deba.

On request, this relay is also available as a freestanding version to be integrated in medium voltage switchgear from any manufacturer brand.

### Your advantages:

- Ready to be connected to a laptop
- User interface with large display
- Easy and fast programming due to a menu oriented interface
- Wide range of protection function and extended functionalities
- Self powered and self steered curves metering
- Possibility of 8 different curves (protection functions)
- Equipped with 4 outgoing contact points and 2 free programmable outgoing points
- Extended fault registration by the use of an auxiliary supply



#### SETTING RANGE

In (A)	50	150	200	400	600
--------	----	-----	-----	-----	-----

#### Phase Fault

I>	0.5 to 2.1 x In	20-105	60-315	80-420	160-840	240-1260
I>>	0.5 to 40 x In	20-2000	60-6000	80-8000	160-16000	240-24000

#### Earth Fault

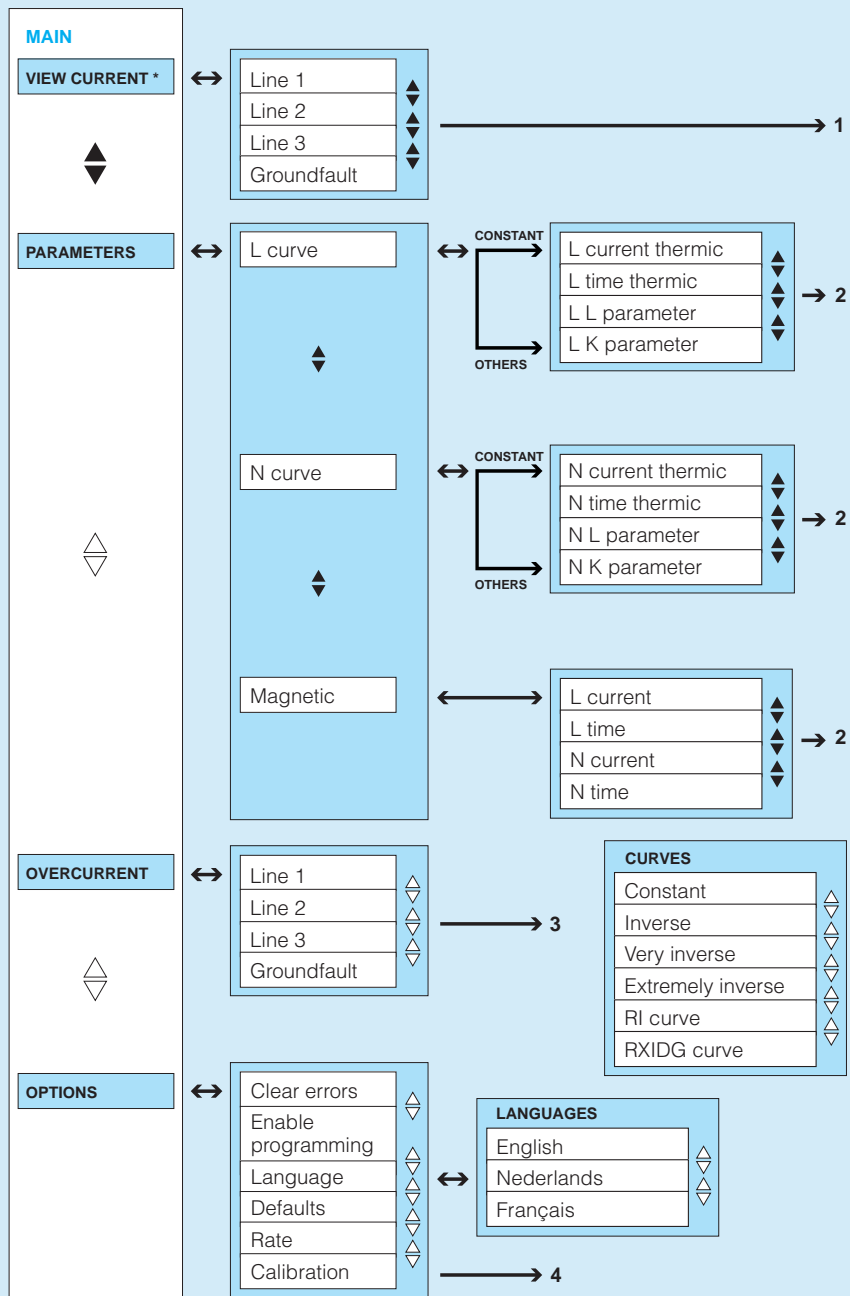
Io>	0.5 to 2.1 x In	10-40	30-120	40-160	80-320	120-480
Io>>	0.5 to 40 x In	10-400	30-1200	40-1600	80-3200	120-4800

*Currents are introduced as absolute values. The hereunder-mentioned values are relative values (related to the ratio of the current transformer). Available current transformer ratios are : 1:50, 1:150, 1:200, 1:400 and 1:600.*

#### CONNECTIONS

	A	B	
[Vac meas+]	12	12	R2 (com)
[Vac meas-]	11	11	R2 (NO)
N	10	10	R2 (NC)
L3	9	9	R1 (com)
L2	8	8	R1 (NO)
L1	7	7	R1 (NC)
OUT- (0V)	6	6	ERR (com)
OUT+ (12V)	5	5	ERR (NO)
[110 Vdc-]	4	4	WARN (com)
[110 Vdc+]	3	3	WARN (NO)
110/220 Vac	2	2	Sens N off +
110/220 Vac	1	1	Sens N off -

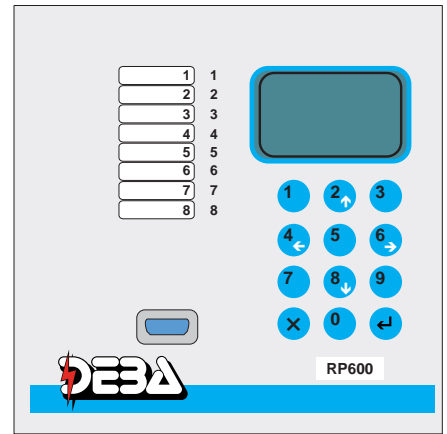
## MENU DISPLAY RP600



△ With external supply  
▲ Without external supply

\* After 20 seconds: all 4 currents viewed

**1: VIEW CURRENT**  
**2: PARAMETERS**  
**3: OVERCURRENT**  
**4: OPTIONS**



### Programming is easy

The use of a keyboard gives the access to the different menus.

The functions are registered under the keys 1 to 9, the cancellation key (X), the confirmation key (Ø) and some other functions are accessible through the arrow keys (2,4,6 and 8).

The relay can only be programmed with an auxiliary supply. By using the confirmation key in the selected menu, it is possible:

- To wipe of the fault currents in the memory (with confirmation)
- To define the standard values (with confirmation)
- To activate the programming (with confirmation)

Every action can be interrupted at any time by pressing the cancellation key.

When the programming is activated, the "warning" LED is on and the mention "Ep" appears in the bottom left corner of the display.

It is possible in the "programming function" to modify the different parameters. Therefore, by using the arrow keys, select the required menu en confirm by using the "confirm" key.

The value will now start to flash en allow the registration of a new value.

If the parameter is not a value than, by the use of the arrow keys select the language, the ratio and the curve. When all the values are programmed and confirmed, they will be placed in the memory of the system.

FUNCTION	MINIMUM VALUE	MAXIMUM VALUE	DEFAULT
Line curve	See user interface	See user interface	Constant
Line Current thermic	0.40 A	2.50 A	1.00 A
Line Time thermic	0.00 s	99.98 / ∞ s	1.00 s
Line L – factor	0.40 A	2.50 A	1.00 A
Line K – factor	0.10	1.00	1.00
Neutral curve	See user interface	See user interface	Constant
Neutral Current thermic	0.20 A	2.50 A	0.80 A
Neutral Time thermic	0.00 s	99.98 / ∞ s	1.00 s
Neutral L – factor	0.04 A	0.80 A	0.20 A
Neutral K – factor	0.10	1.00	1.00
Line Current magnetic	0.40 A	12.00 A	4.00 A
Line Time magnetic	0.00 s	99.98 / ∞ s	0.50 s
Neutral Current magnetic	0.40 A	7.50 / ∞ A	∞ A
Neutral Time magnetic	0.00 s	99.98 / ∞ s	0.5 s
Language	See user interface	See user interface	Nederlands





**DEBA, the name of permanent safety in medium voltage**  
Deba supplies since more than 20 years reliable products for the distribution of electricity. Innovative thinking and environment sensibility are at Deba the most important drive. The use of a minimum of components is targeting in the development of efficient complete solutions having all an exceptional life expectancy.

The Deba organisation stays for high valuable quality and customer orientated strategy, whereby the customer specificities and his targets are our main concerns.

With the use of an exclusive machine park and production lines with a high automation degree, we are developing "state of the art" components and systems of which the DF-2, RV 44, VA-2 and RP600 are answering the highest quality standards.

We are making true what we are promising in the field of delivery times, prices and products.

**Deba NV**  
Moorstraat 24  
B-9850 Nevele  
Belgium  
Tel.: +32 (0)9 371 75 51  
Fax: +32 (0)9 371 59 25  
Internet: [www.debanv.com](http://www.debanv.com)  
E-mail: [info@debanv.com](mailto:info@debanv.com)

